

# ROAD INDEX

A	I cont.	R	ROCK CREEK RD. A6-F4
1	J	S	SIDLEY RD. F1-F6
B	BURROWS RD. B6-F6	STOCKING RD. DI-F1	SHORT RD. F2-F3
2	K	T	THOMPSON RD. A3-F3
C	CLAY STREET 31-B6	TRASK RD. A2-A3	
3	L	U	
D	DEWEY RD. C1-C6	V	VALENTINE RD. A4-B4
4	M	W	
5	MADISON RD. DI-D6	X	
6	MOSELEY RD. A1-F2	Y	
	N	Z	
	O		
	P		
	PHILIPS RD. F3		
	PLANK RD. A5-B6		
	Q		

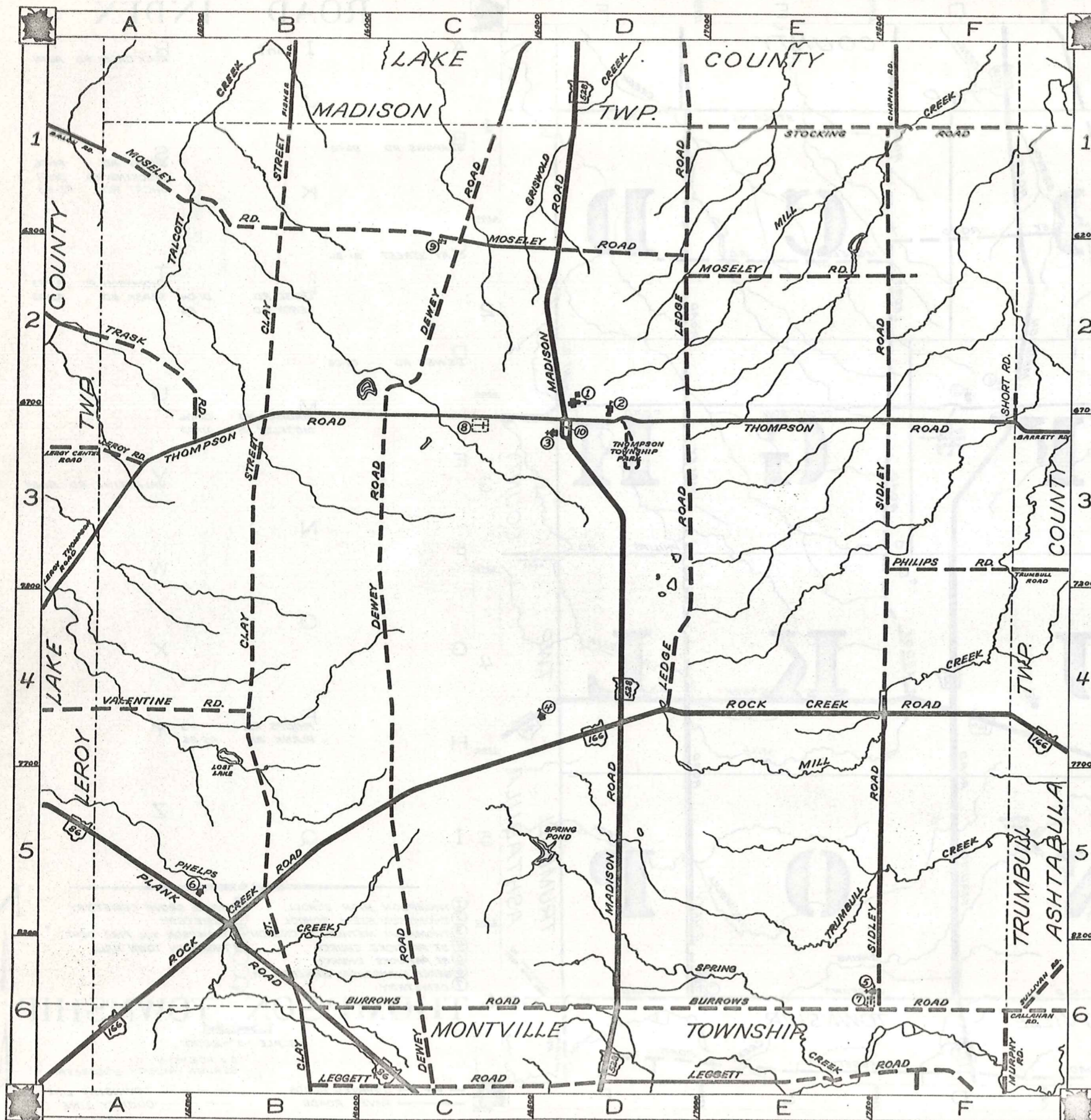
- ① THOMPSON HIGH SCHOOL
- ② THOMPSON ELEM. SCHOOL
- ③ THOMPSON METHODIST CHURCH
- ④ ST. PATRICK'S CHURCH
- ⑤ ST. PATRICK'S CHURCH
- ⑥ GRACE EVANGELICAL LUTHERAN CH.
- ⑦ CEMETERY
- ⑧ MAPLE GROVE CEMETERY
- ⑨ CEMETERY
- ⑩ THOMPSON VOL. FIRE DEPT.
- ⑪ THOMPSON TOWN HALL

## THOMPSON TOWNSHIP

SCALE: 1" = 2000'

O.J. ROBINSON  
GEAUGA COUNTY ENGINEER

--- UNPAVED ROADS  
--- TOWNSHIP LINE  
--- PAVED ROADS  
--- COUNTY LINE



# ROAD INDEX

A	I cont.	R	ROCK CREEK RD. A6-F4
J			
B	BURROWS RD. B6-F6	S	SIDLEY RD. F1-F6 STOCKING RD. D1-F1 SHORT RD. F2-F3
K			
C	CLAY STREET B1-B6	T	THOMPSON RD. A3-F3 TRASK RD. A2-A3
L	LEDGE RD. LEROY RD.		
D	DEWEY RD. C1-C6	U	
M	MADISON RD. D1-D6 MOSELEY RD. A1-F2	V	VALENTINE RD. A4-B4
E			
F		N	
G		O	
H	PHILIPS RD. F3 PLANK RD. A5-B6	W	
I		X	
Q		Y	
Z			

- ① THOMPSON HIGH SCHOOL
- ② THOMPSON ELEM. SCHOOL
- ③ THOMPSON METHODIST CHURCH
- ④ ST. PATRICKS CHURCH
- ⑤ ST. PATRICKS CHURCH
- ⑥ GRACE EVANGELICAL LUTHERAN CH.
- ⑦ CEMETERY
- ⑧ MAPLE GROVE CEMETERY
- ⑨ CEMETERY
- ⑩ THOMPSON VOL. FIRE DEPT.
- ⑪ THOMPSON TOWN HALL

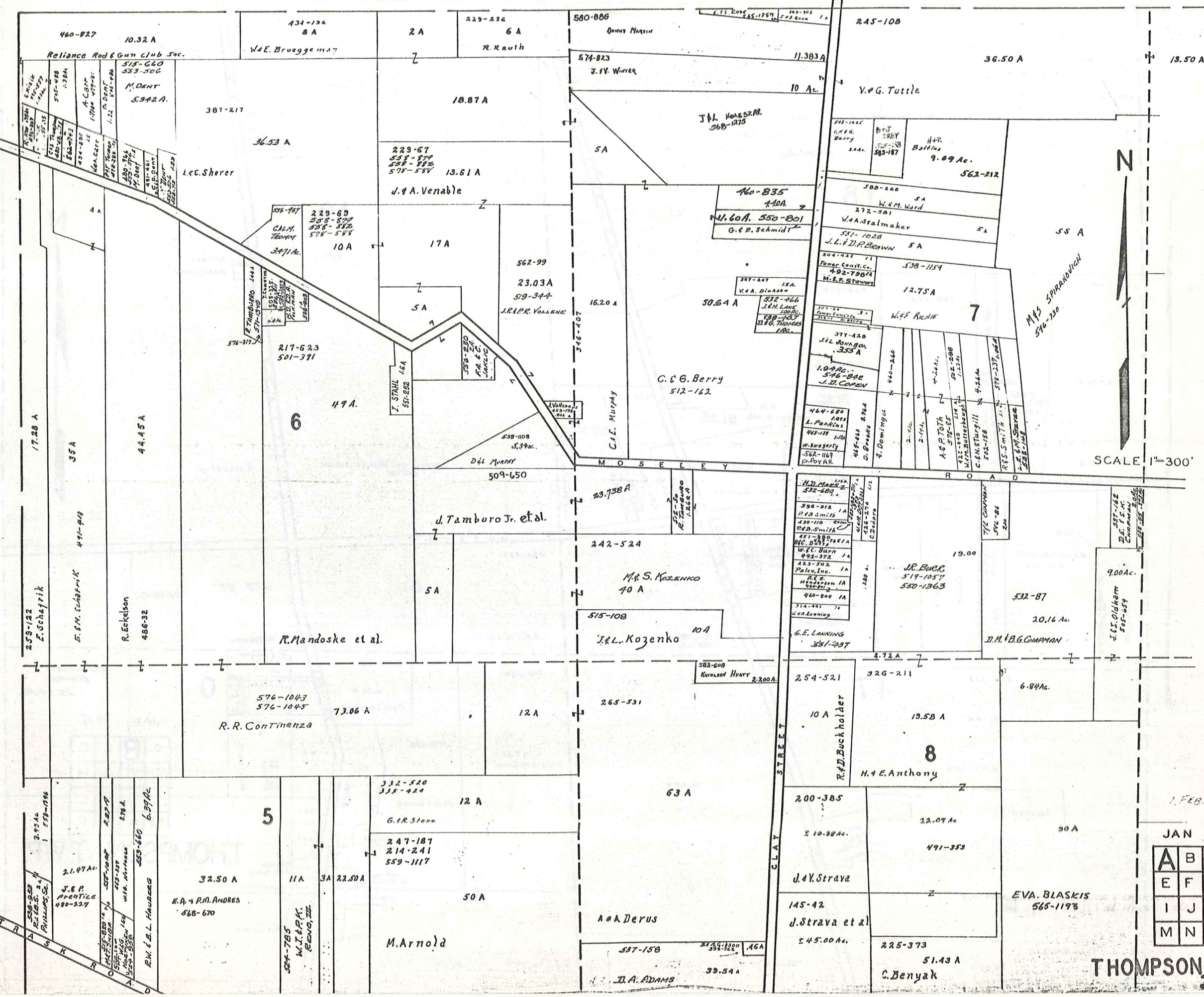
## THOMPSON TOWNSHIP

SCALE: 1"=2,000'

O.J. ROBINSON  
GEORGIA COUNTY ENGINEER

--- UNPAVED ROADS  
--- TOWNSHIP LINE  
--- COUNTY LINE

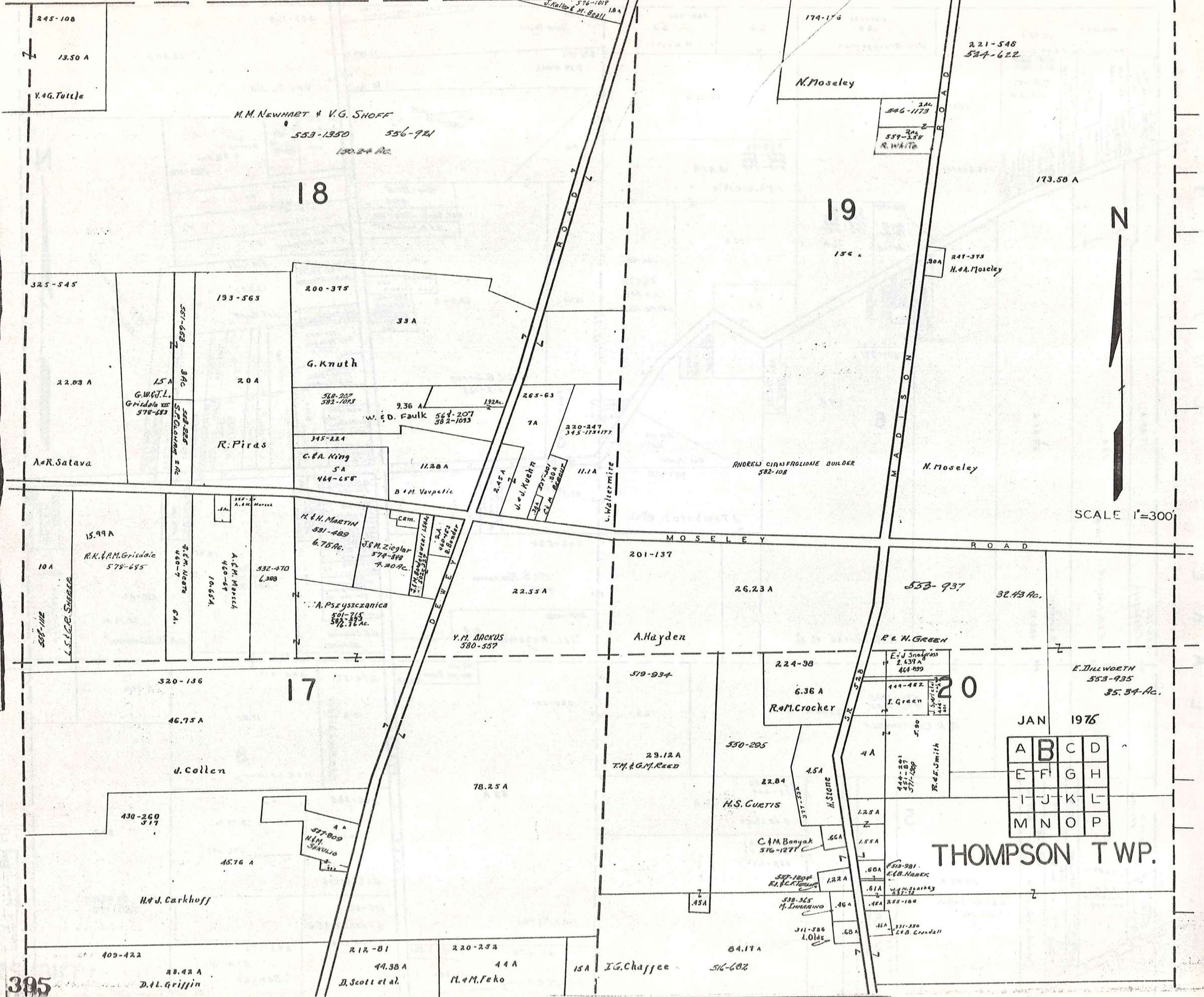
L A K E C O U N T Y



JAN 1976

A	B	C	D
E	F	G	H
I	J	K	L
M	N	O	P

L A K E C O U N T Y



SCALE 1"=300'

JAN 1976

A	B	C	D
E	F	G	H
I	J	K	L
M	N	O	P

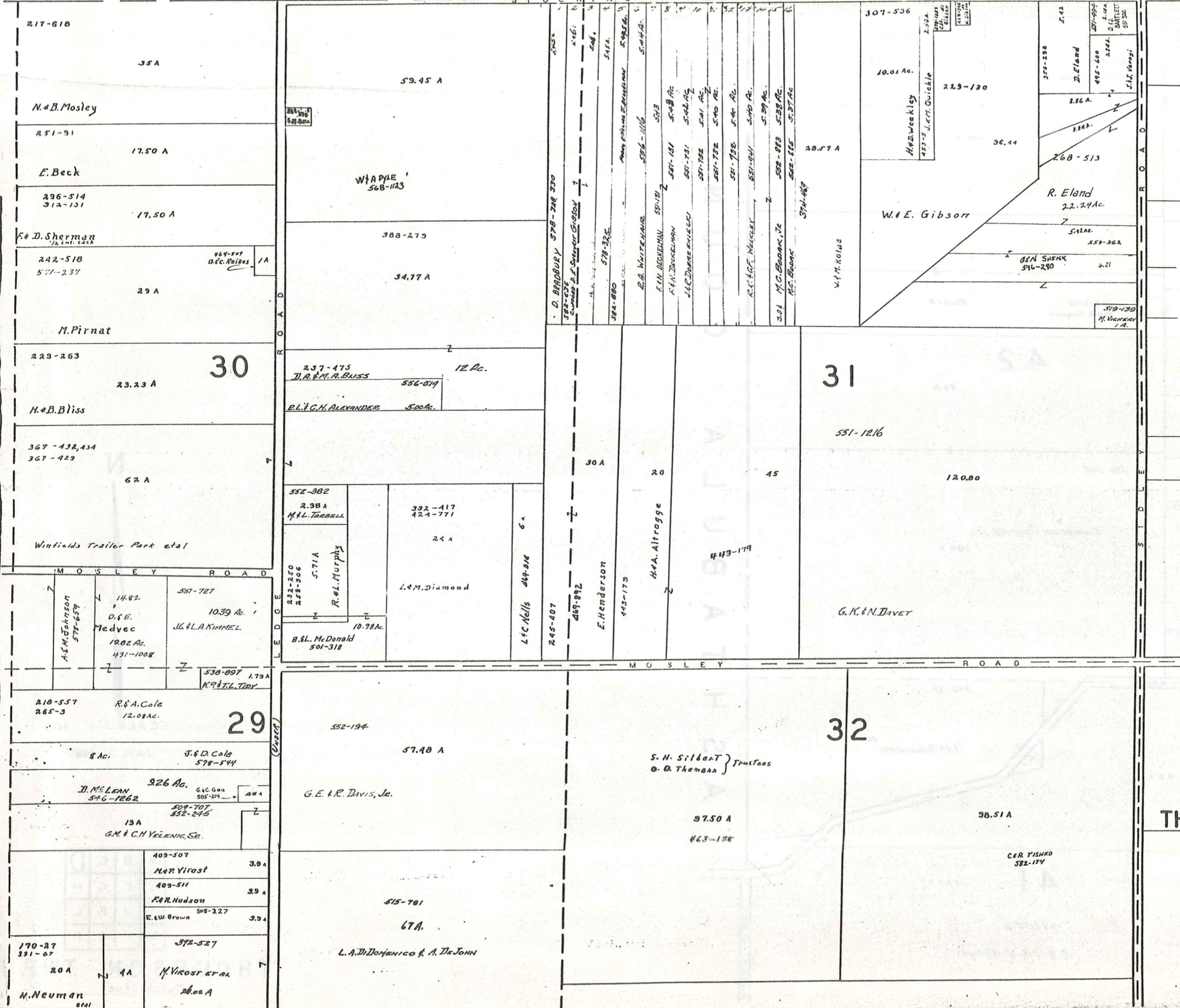
THOMPSON TWP.

395

L A K E C O U N T Y

S T O C K I N G

R O A D



SCALE 1" = 300'  
JAN 1976

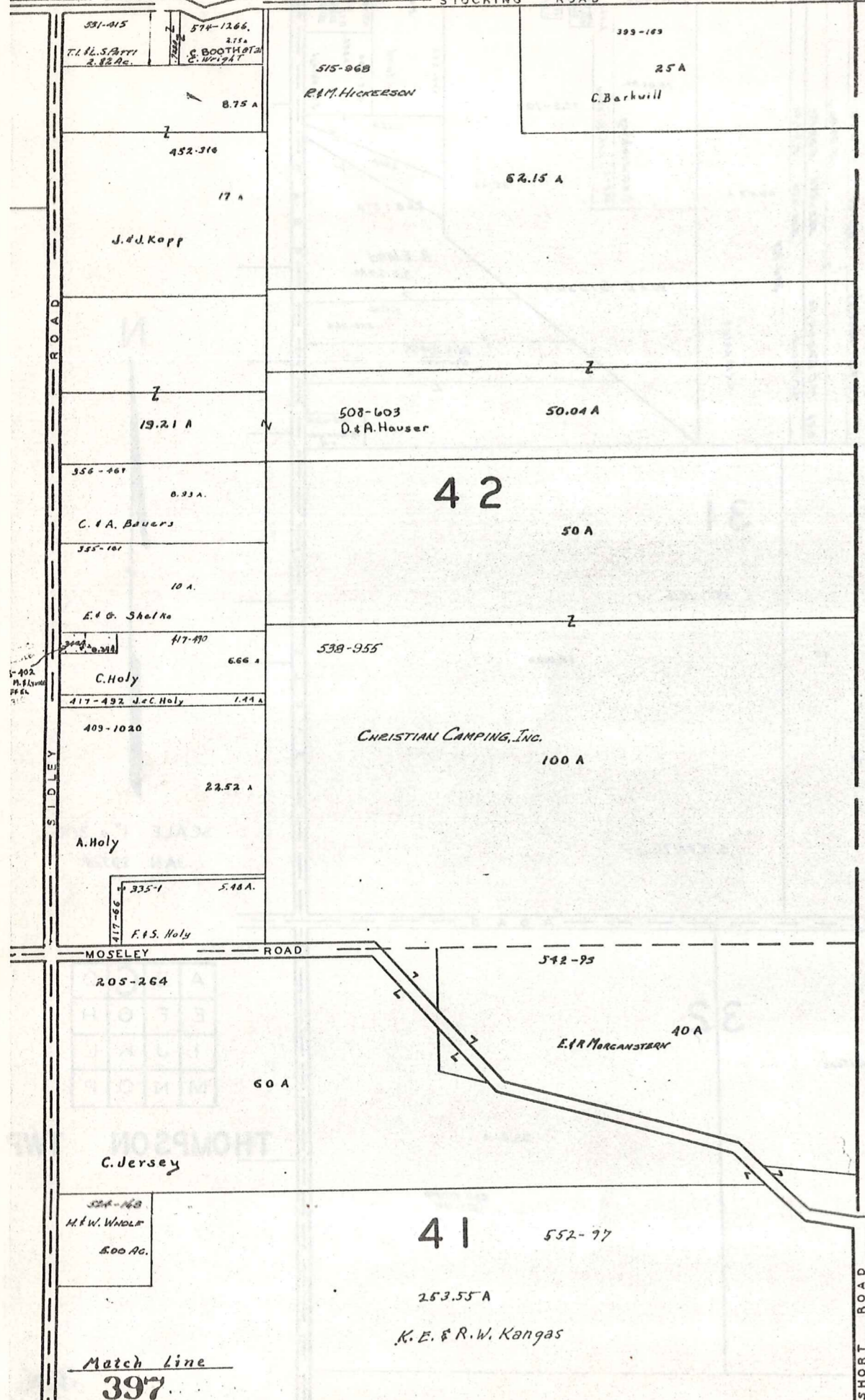
A	B	C	D
E	F	G	H
I	J	K	L
M	N	O	P

THOMPSON TWP

L A K E C O U N T Y

STOCKING ROAD

A S H T A B U L A C O U N T Y



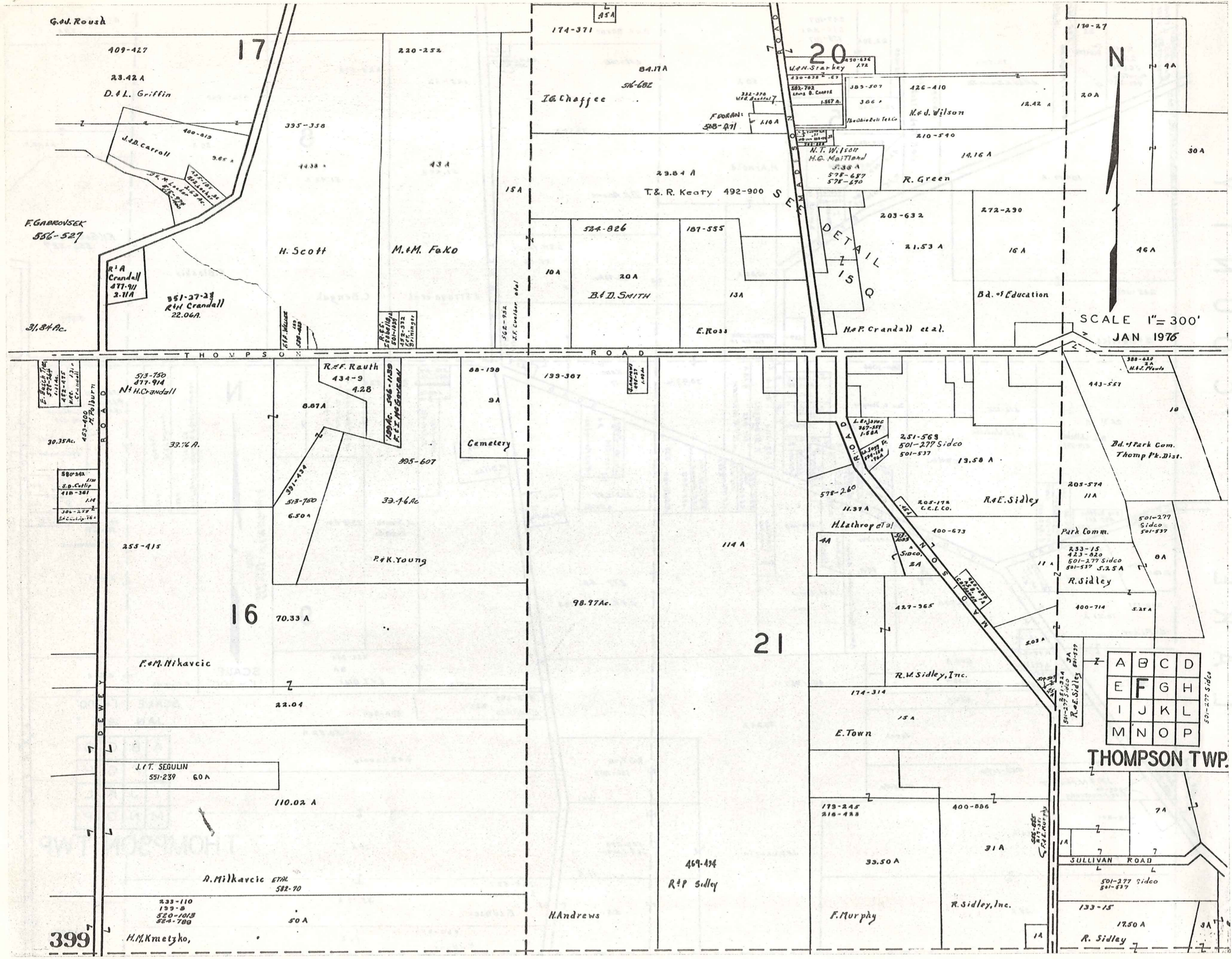
SCALE 1" = 300'  
 JAN 1976

A	B	C	D
E	F	G	H
I	J	K	L
M	N	O	P

THOMPSON TWP.  
 Match Line

Match Line  
 397





SCALE 1" = 300'  
JAN 1976

A	B	C	D
E	F	G	H
I	J	K	L
M	N	O	P

THOMPSON TWP.

G. Ad. Roush

17

20

16

21

399

409-427

23.42 A

D.L. Griffin

220-252

174-371

84.17A

J.G. Chaffee

420-636

1.72

M.H. Starkey

426-410

12.42 A

M.H. Wilson

170-27

20A

30A

46A

F. GABROVSEK  
556-527

R.A. Crandall  
471-911  
2.11A

551-27-23  
R.H. Crandall  
22.06A

H. Scott

M.H. Feko

29.84 A

T.&R. Keaty 492-900

N.T. Wilson

H.G. Matland

5.38 A

578-687

578-670

19.16 A

R. Green

DETAILS  
Z  
I  
S  
Q

203-632

21.53 A

272-230

16 A

Bd. of Education

H.P. Crandall et al.

THOMPSON ROAD

ROAD

ROAD

E. Basch  
528-544  
1.14

30.35Ac.

513-750  
477-914  
N.H. Crandall

33.16 A.

R.F. Rauth  
434-9

4.28

6.87A

305-607

33.76Ac

R.K. Young

Cemetery

88-198

9A

193-307

98.97Ac.

L. E. J. J. J.

267-557

1.58A

578-260

11.37A

H. Lathrop et al.

4A

Sidco

2A

427-365

11A

R.M. Sidley, Inc.

174-314

15A

E. Town

179-245

216-422

33.50 A

F. Murphy

400-886

31A

R. Sidley, Inc.

469-434

R.P. Sidley

H. Andrews

501-277 Sidco

501-537

133-15

17.50 A

R. Sidley

501-277 Sidco

501-537

133-15

17.50 A

R. Sidley

501-277 Sidco

501-537

133-15

17.50 A

R. Sidley

501-277 Sidco

501-537

133-15

17.50 A

R. Sidley

501-277 Sidco

501-537

133-15

17.50 A

R. Sidley

501-277 Sidco

501-537

133-15

17.50 A

R. Sidley

501-277 Sidco

501-537

133-15

17.50 A

R. Sidley

501-277 Sidco

501-537

133-15

17.50 A

R. Sidley

501-277 Sidco

501-537

133-15

17.50 A

R. Sidley

501-277 Sidco

501-537

133-15

17.50 A

R. Sidley

501-277 Sidco

501-537

133-15

17.50 A

R. Sidley

501-277 Sidco

501-537

133-15

17.50 A

R. Sidley

501-277 Sidco

501-537

133-15

17.50 A

R. Sidley

501-277 Sidco

501-537

133-15

17.50 A

R. Sidley

501-277 Sidco

501-537

133-15

17.50 A

R. Sidley

501-277 Sidco

501-537

133-15

17.50 A

R. Sidley

501-277 Sidco

501-537

133-15

17.50 A

R. Sidley

501-277 Sidco

501-537

133-15

17.50 A

R. Sidley

501-277 Sidco

501-537

133-15

17.50 A

R. Sidley

501-277 Sidco

501-537

133-15

17.50 A

R. Sidley

501-277 Sidco

501-537

133-15

17.50 A

R. Sidley

501-277 Sidco

501-537

133-15

17.50 A

R. Sidley

501-277 Sidco

501-537

133-15

17.50 A

R. Sidley

501-277 Sidco

501-537

133-15

17.50 A

R. Sidley

501-277 Sidco

501-537

133-15

17.50 A

R. Sidley

501-277 Sidco

501-537

133-15

17.50 A

R. Sidley

501-277 Sidco

501-537

133-15

17.50 A

R. Sidley

501-277 Sidco

501-537

133-15

17.50 A

R. Sidley

501-277 Sidco

501-537

133-15

17.50 A

R. Sidley

501-277 Sidco

501-537

133-15

17.50 A

R. Sidley

501-277 Sidco

501-537

133-15

17.50 A

R. Sidley

501-277 Sidco

501-537

133-15

17.50 A

R. Sidley

501-277 Sidco

501-537

133-15

17.50 A

R. Sidley

501-277 Sidco

501-537

133-15

17.50 A

R. Sidley

501-277 Sidco

501-537

133-15

17.50 A

R. Sidley

501-277 Sidco

501-537

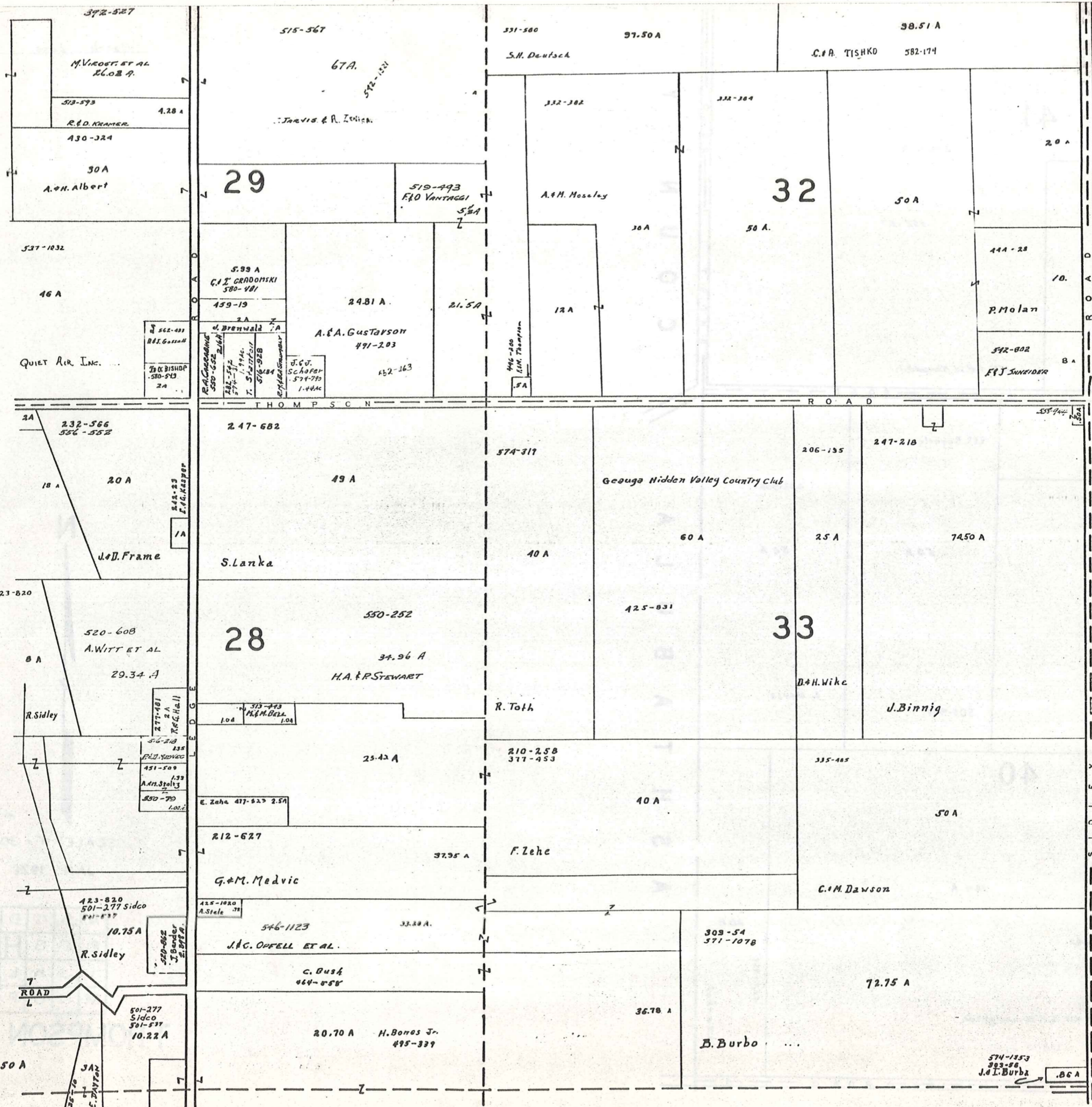
133-15

17.50 A

R. Sidley

501-277 Sidco

501-537



SCALE 1" = 300'

JAN 1976

A	B	C	D
E	F	G	H
I	J	K	L
M	N	N	P

THOMPSON TWP.

Match Line

Match Line

41

C O U N T Y

A S H T A B U L A

495-205  
4 A  
L. Hunt

253.55 A

404-309, 311, 312  
3 A  
R. Gos - 816-878  
501-512 3A

552-97

580-920  
D. M. F. J.  
J.M. Ronnbaush  
5533 9c.  
355-359  
2092 A

K.E. & R.W. Kangas

THOMPSON ROAD

205-92  
24 A  
R. Whipple

± 20 A

R.R. Beyerle

A. Stone

492-909

292-570

50 A

50 A

75 A

L. Davis

L. A. Schaeffer

505-968

40

373-77  
368-88  
4 A.  
M. Horlecher  
341-478

15 A

124 A

L. C. Klingensmith

20 A

492-842

5 A

J. Ornstein & E. S. Leighton

3 A

401

424-912

A. Tankel

PHILIPS ROAD



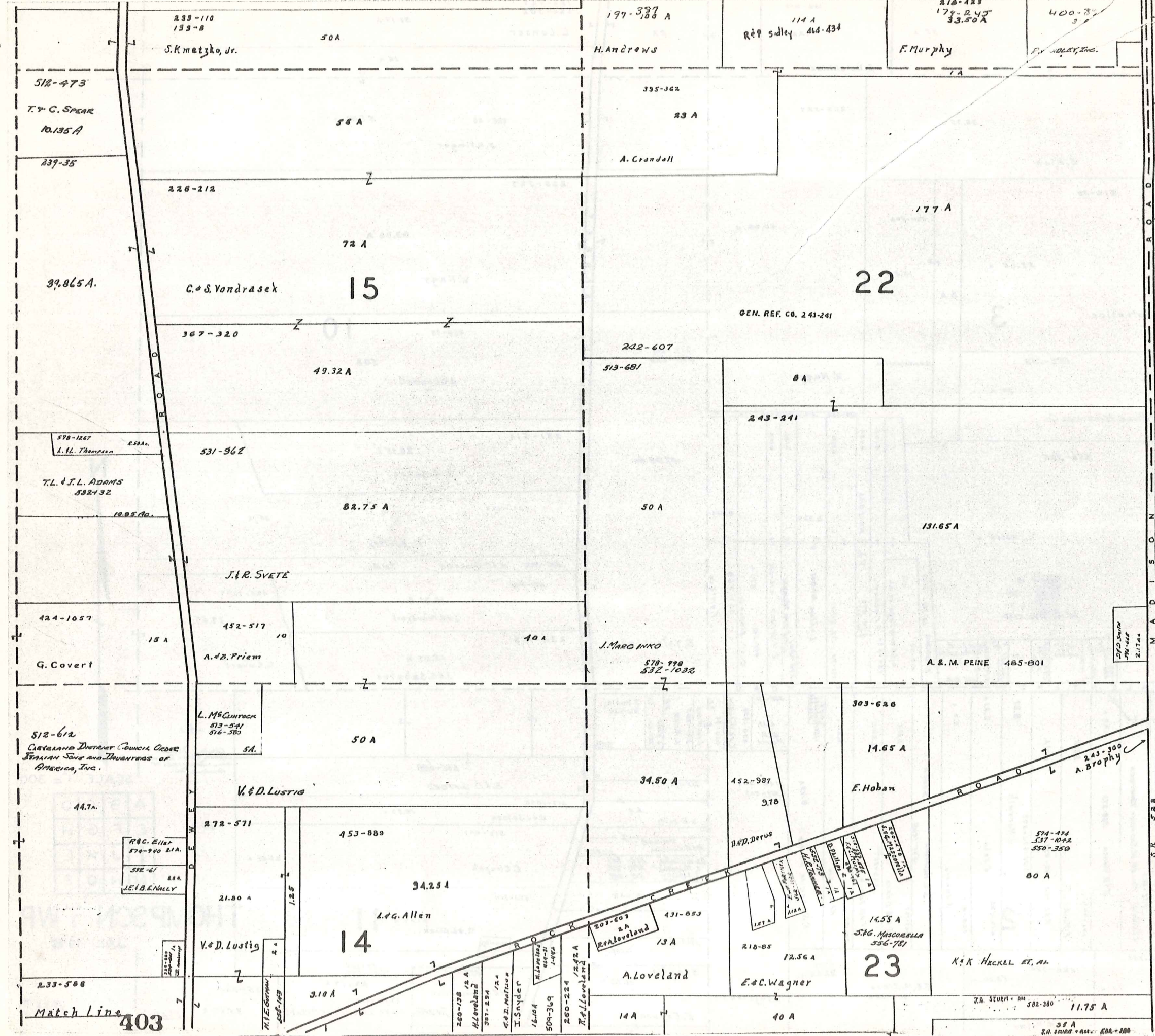
SCALE 1" = 300'

JAN 1976

A	B	C	D
E	F	G	H
I	J	K	L
M	N	O	P

THOMPSON TWP.





SCALE 1" = 300'

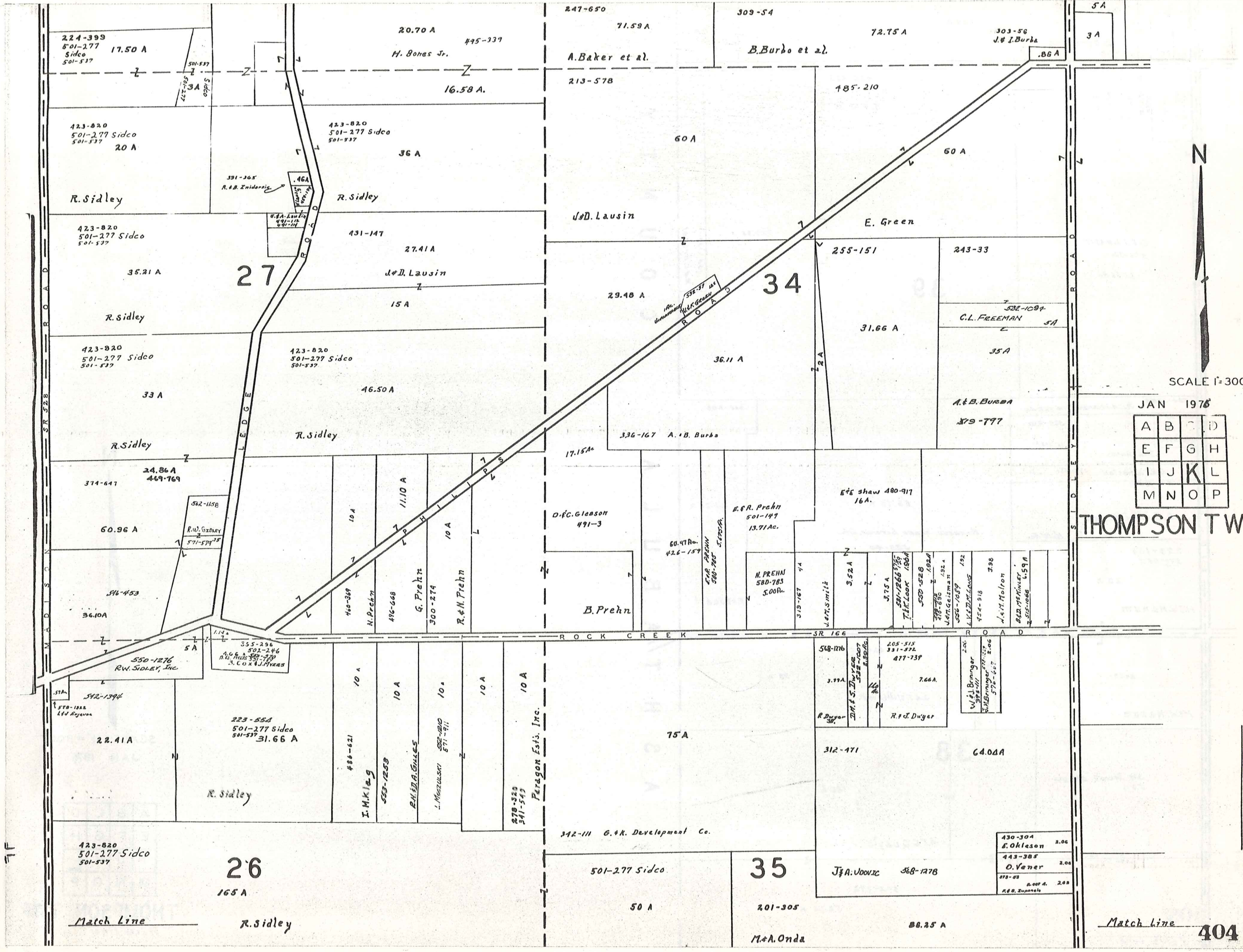
JAN 1975

A	B	C	D
E	F	G	H
I	J	K	L
M	N	O	P

THOMPSON TWP

Match Line 403

Match Line



SCALE 1"=300'

JAN 1976

A	B	C	D
E	F	G	H
I	J	K	L
M	N	O	P

THOMPSON TWF

224-399  
501-277 Sidco  
501-537  
17.50 A

20.70 A  
495-339  
H. Bohas Jr.  
16.58 A

247-650  
71.59 A  
A. Baker et al.

309-54  
B. Burba et al.

72.75 A  
303-56  
J. & I. Burba  
.86 A

5 A  
3 A

423-820  
501-277 Sidco  
501-537  
20 A

423-820  
501-277 Sidco  
501-537  
36 A

213-578

185-210

R. Sidley

R. Sidley

J. D. Lausin

E. Green

423-820  
501-277 Sidco  
501-537  
35.21 A

431-147  
27.41 A  
J. D. Lausin

29.48 A

34

255-151

243-33

423-820  
501-277 Sidco  
501-537  
33 A

423-820  
501-277 Sidco  
501-537  
46.50 A  
R. Sidley

36.11 A

31.66 A

532-1097  
C. L. FREEMAN  
35 A

R. Sidley

R. Sidley

17.15 A

336-167 A. & B. Burba

E. & S. Shaw 480-917  
16 A.

374-647  
24.86 A  
469-769

562-115B  
R. W. SIDLEY  
571-574

10 A

11.10 A

10 A

10 A

D. F. Gleason  
491-3

60.47 A  
426-157  
E. R. PREHN  
580-780

E. R. Prehn  
501-147  
13.71 A.

60.96 A

54-453  
36.10 A

ROCK CREEK SR 166

E. & S. Shaw 480-917  
16 A.

N. PREHN  
580-783  
5.00 A.

319-167

4

3.52 A

3.75 A

501-266

500-528

500-528

500-528

500-528

500-528

500-528

500-528

500-528

500-528

500-528

500-528

500-528

550-1276  
R. W. SIDLEY, INC.

355-296  
502-246  
A. W. Myers  
S. Cox & J. Myers

10 A

10 A

10 A

10 A

10 A

10 A

Peragon Ests. Inc.

75 A

548-176  
3.99 A

205-515  
331-572  
477-739  
7.66 A

W. J. Bringer  
575-111  
W. M. Bringer  
575-111  
575-111

22.41 A

223-554  
501-277 Sidco  
501-537  
31.66 A  
R. Sidley

486-621  
I. M. K. I. G.

503-1253  
P. H. D. A. G. I. G. S.

582-810  
L. M. Z. U. S. I.

571-811

278-320  
341-543

Peragon Ests. Inc.

342-111 G. & K. Development Co.

312-471

64.04 A

423-820  
501-277 Sidco  
501-537

26  
165 A  
R. Sidley

501-277 Sidco

35

J. & A. Uovuzc 568-1278

430-304  
S. Okleson 2.06  
443-385  
O. Vener 2.06  
475-23  
R. O. A. 2.03  
R. B. Zupancic

Match Line

Match Line

404

184-128

124 A

424-312

3A

B. Ornstein

20 A  
A. Rankel

PHILIPPS ROAD

185-425

J. & M. HOPE

123.35 A

39

C. & J. LAUSIN  
576-301

67.36 Ac

435-150  
R. C. Hovot

524-1083 R. A. HESTON 4.592 Ac.

315-206

356-57  
E.A.  
J. D. BUBBA  
3+4 ACRES

565-330  
15.408 Ac.

J. R. A. HESTON 578-521 4 Ac.

524-B5B

L. E. & M. J. MILLER

16.15 Ac.

69.75 A

MILDRED'S WHEEL ESTATES, INC.

523-40

20.25 A

F. Y. Saari

223-104  
571-457

20 A

M. & W. Hanum

ROCK CREEK SR 166 ROAD

24.53 A

M. & W. Hanum

424-201

33 A

J. & F. Williams

38

J. & S. Jirousek 479-694  
50 A

40 A

J. & G. Quayle

502-972

58.88 A

A S H T A B U L A C O U N T Y



SCALE 1" = 300'  
JAN 1974

A	B	C	D
E	F	G	H
I	J	K	L
M	N	O	P

THOMPSON TWP  
Match Line

105

Match Line

L A K E C O U N T Y

Match Line

Match Line

254-386

60 A

V. Grinius

2

54.27 A

S.E. & JoAnn Decker III

550-930

212-604

C. Grinius

37 A

31.08 A

J. & M. Binns  
469-226

142-387

320-410

E. Erjavec

551-1276

M.E. Aexo

557-927

70 A

E. Erjavec

30 A

145-103

20 A

B. Costarigi

159-15  
454-572

195-333

29,157 A  
M. Fromer  
Lake Erie Iron  
& Metal Co.

35.97 A

208-183

233-87 263-264

L. Hosta

188-69  
233-300

16.36 A

M. Lustik et al.

303-94  
351-371

35 A

Vitantonio  
Inc.

CITIZENS SAVINGS & LOAN CO.  
551-219

68.72 A

ER. Young  
382-0227

COLEMAN  
382-0227

1.00 A

1.00 A

1.00 A

1.00 A

1.00 A

1.00 A

1.00 A

1.00 A

1.00 A

1.00 A

1.00 A

1.00 A

1.00 A

1.00 A

1.00 A

1.00 A

243-191

2.50 A

291-602

31.23 A

L. Lawrence

281-322  
8.77 A  
Evangelical  
Church

199-528  
5 A  
R. M. Derrell

221-231

21 A

H. & P. Lawrence

330-621 H. Fisher  
10 A

4.32 A

15 A

224-276

32.14 A

J. Corrigan

18.63

1.00 A

1.00 A

1.00 A

1.00 A

1.00 A

1.00 A

1.00 A

1.00 A

1.00 A

1.00 A

1.00 A

1.00 A

424-890

23.69 A

221-125

.75 A

.50 A

.64 A

.1 A

.1 A

.1 A

.1 A

.1 A

.1 A

.1 A

.1 A

.1 A

.1 A

.1 A

.1 A

.1 A

.1 A

.1 A

.1 A

.1 A

.1 A

.1 A

.1 A

.1 A

.1 A

.1 A

.1 A

.1 A

.1 A

.1 A

.1 A

.1 A

.1 A

.1 A

.1 A

.1 A

.1 A

.1 A

12

220-427

21.40 A

221-117

21.40 A

29.79

J. & A. Magyar

4.28

J. A. Lutzig

558-49

2.57-153

9.07 A

A. & P. Nells

2.57-153

9.07 A

2.57-153

9.07 A

2.57-153

9.07 A

2.57-153

9.07 A

2.57-153

9.07 A

2.57-153

9.07 A

2.57-153

9.07 A

2.57-153

9.07 A

2.57-153

2.57-153

247-221  
574-824

90.50 A

L. & M. White

443-323  
520-751

22.44 A

E. T. Anderson

226-524  
538-770  
558-95

F. Zivoder et al.

M. Susman  
251-326  
551-174 A  
551-602

2.57-153

9.07 A

A. & P. Nells

2.57-153

9.07 A

2.57-153

9.07 A

2.57-153

9.07 A

2.57-153

9.07 A

2.57-153

9.07 A

2.57-153

9.07 A

2.57-153

9.07 A

2.57-153

2.57-153

THOMPSON TWP.

97.68 A

JAN 1976

A	B	C	D
E	F	G	H
I	J	K	L
M	N	O	P

SCALE 1" = 300'



406

BURROWS

7F



Match Line

Match Line

26

35

38

423-820  
501-277 Sidco  
501-537

501-277 Sidco  
501-537

86.25 A

165 A

50 A

M. Onda et al.  
520-833  
532-356

R. Sidley

196-77

49.83 A

205-275

M. Sidley

90 A

242-77

49.83

L. Ramsey et al.

T. M. O'Kicki

218-611

254-437

94 A

546-977 S. Scymon	557-1003, 1005 R. C. Mc Lane 2.72 A	285 A
8.63 A		
454-142 16.35 A Kennemetal Rod & Gun Club		
300-143 A. N. Demukaitis 9.62 A		
556-637 G. E. & J. L. Goehring 9.62 A		
231-261 232-116 L. Goudy et al. 5.78 A		

131.67 A

M. & J. Guditas

224-6  
234-169

224-5

26.30 A

F. Barnum et al.

251-95

60.92 A

25.50 A

326-37 B. Turner	235 A
374-87 B. H. Turner	2 A
.50 A	

424-583

25

47.06 A

B. H. Turner

W. Anderson

189-439

74.59 A

36

20 A

427-814

106.50 A

425-344  
B. H. Turner

38.46 A B & B Turner 480-4

3 A

M. B. Di Vincenzo  
550-1241  
20.00 AC.

356-316 5 A

35 A

R. & J. Yelcho

14.50 A

310-145  
134 A  
J. J. Geasman

318-231  
113 A

502-400  
J. L. Geasman

W. Gurich et al.

105 A

130 A  
R. F. Schulte  
571-257

M. Dunbar  
528-183

239-440 5 A  
G. Kimak

W. M. Bower

557-035  
115  
1460  
109 A  
Cem.

A	B	C	D
E	F	G	H
I	J	K	L
M	N	O	P

THOMPSON TW



SCALE 1" = 300'  
JAN 1976

408

ROAD  
WADSWORTH

ROAD  
SIDLEY

BURROWS

ROAD

Match Line

Match Line

459-355

38

68.88 A

J. Stocker

7

196-77

M. Sidley

50 A

L

50 A

J. Stocker

Z

25 A

Z

69.25 A

257-418

5.75 A

E. Stocker

Z

110 A

J. Stocker

37

87.37 A

U.S. Auto Raceways, Inc.  
587-1880

14.33 A

581-188  
G.S.  
GREENHART  
2.28 A

491-654

5.96 Ac.

496-153

492-232

15.59 A

6.942 A

J. Brazofsky

518-628

M. Smialek

H.A. HOUSE 36.88 Ac.

425-955

9.125 A

J. Brazofsky

585-382  
F.M. HENDER

409

BURROWS

ROAD

A S H T A B U L A C O U N T Y



JAN 1974

SCALE 1" = 300'

A	B	C	D
E	F	G	H
I	J	K	L
M	N	O	P

# THOMPSON T.P.

PART OF LOTS 20 & 21

